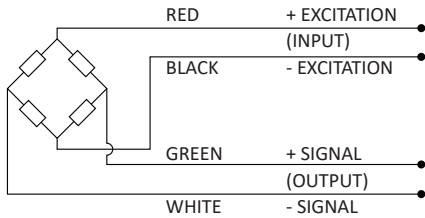


GWMC SERIES IN LINE LOAD CELL 200N - 5000N (METRIC)

Miniature Threaded In Line Load Cells are strain gauge based transducers with temperature compensation and excellent overall performance. This type measures tensile and compressive loads up to 5000N with better than $\pm 0.25\%$ non-linearity.

WIRING DIAGRAM

The sensor is provided with a #32 AWG 4-conductor braided shielded cable with an outer jacket of 2.2 mm diameter, 2m long, with no connection between the shield and the sensor body. For additional protection, the cable is contained within a stainless steel spring for strain relief purposes for the first 25 mm.



STANDARD CONFIGURATION



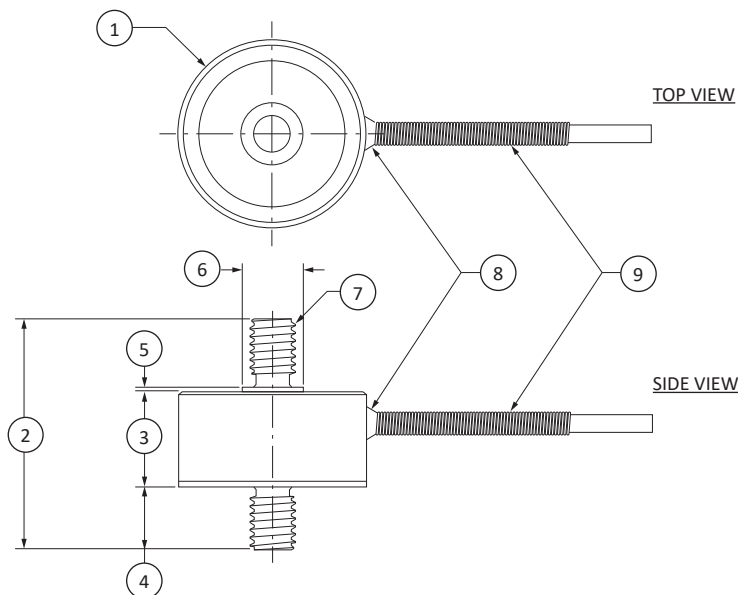
Model GWMC-200N-N-3 (Shown)

SPECIFICATIONS

| PARAMETER | RANGE | NOTES |
|-------------------------------|----------------------------------|---------------------------------|
| Capacity | 200N, 500N, 1000N, 2000N & 5000N | With metric threads as standard |
| Rated Output (RO) | 2mV/V nominal | |
| Allowable maximum load | 150% full scale | No effect on performance |
| Non-linearity | $\pm 0.25\%$ of RO MAX | |
| Hysteresis | $\pm 0.25\%$ of RO MAX | |
| Repeatability | $\pm 0.1\%$ of RO MAX | |
| Zero balance | 5% of RO MAX | |
| Zero temp coefficient | 0.018% FS / °C | |
| Span temp coefficient | 0.036% FS / °C | |
| Compensated temperature range | -15 °C TO 70 °C | Wider range available to order |
| Operating temperature range | -20 °C TO 80 °C | Wider range available to order |
| IP Rating | IP64 | |
| Bridge resistance | 700 ohm nominal | |
| Excitation | 5v Recommended, 10v Max | |

* All dimensions are in mm.
 ** This product is not available in the United States.

GWMC SERIES IN LINE LOAD CELL 200N - 5000N (METRIC)



DIMENSIONS

| (1) | (2) | (3) | (4) | (5) | (6) | (7) | (8) | (9) |
|--------|-------|-------|------|------|-------|-------------|--------------|----------------------|
| Ø25.00 | 30.75 | 12.70 | 8.40 | 0.50 | Ø8.13 | M6x1-6g x 2 | Epoxy Fillet | Strain Relief Spring |

* All dimensions are in mm.

** This product is not available in the United States.

+ Output (Tension)
- Output (Compression)



| Capacity | Deflection Nominal | Thread |
|----------|--------------------|---------|
| 200N | 0.05 [.002] | M6x1-6g |
| 500N | 0.05 [.002] | M6x1-6g |
| 1000N | 0.05 [.002] | M6x1-6g |
| 2000N | 0.05 [.002] | M6x1-6g |
| 5000N | 0.05 [.002] | M6x1-6g |