

## 1216 AXIAL TORSION LOAD CELL (U.S. & METRIC)

### FEATURES & BENEFITS

- Measures load and torque
- Minimal crosstalk
- Extraneous load resistance
- Fatigue rated

### SPECIFICATIONS

	Axial Bridge A	Torsion Bridge B
<b>ACCURACY – (MAX ERROR)</b>		
Nonlinearity – %FS	±0.04	±0.07
Hysteresis – %FS	±0.04	±0.05
Nonrepeatability – %RO	±0.02	±0.05
Creep, in 20 min – %	±0.025	±0.025
<b>TEMPERATURE</b>		
Effect on Zero – %RO / deg	°F	±0.08
Effect on Output – % / deg	°F	±0.08
Compensated Range	°F	+15 to +115
	°C	-10 to +45
Operating Range	°F	-65 to +200
	°C	-55 to +90
<b>ELECTRICAL</b>		
Rated Output – mV/V (Nominal)	1.50	1.80
Zero Balance – %RO	±2.0	±2.0
Input Resistance – Ohms	700 ±7	700 ±7
Output Resistance – Ohms	700 ±7	700 ±7
Excitation Voltage – VDC MAX	20	20
<b>MECHANICAL</b>		
Calibration	T & C	CW & CCW
Safe Overload – %CAP	±200	±200
Ultimate Overload – %CAP	±400	±400
Material	Aluminum	

### STANDARD CONFIGURATION



Model 1216CEW-2K (Shown)

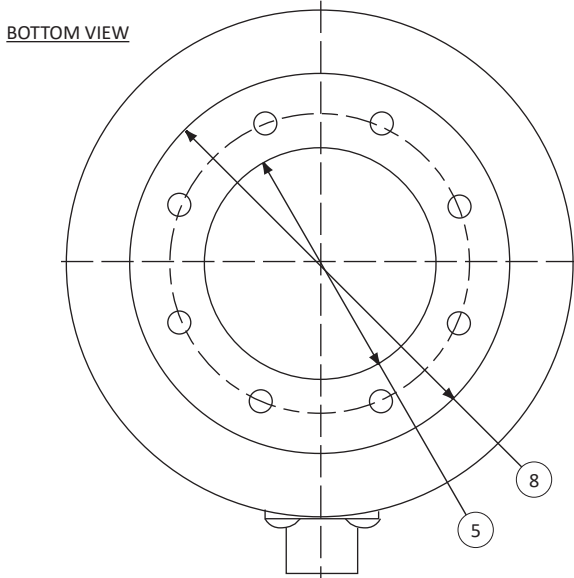
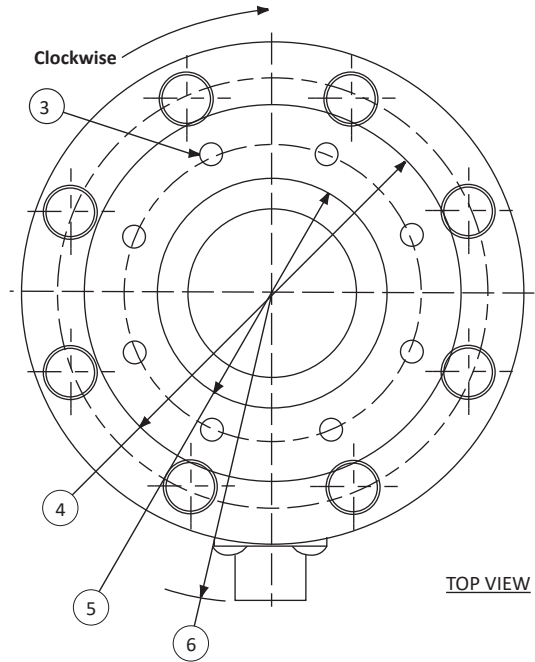
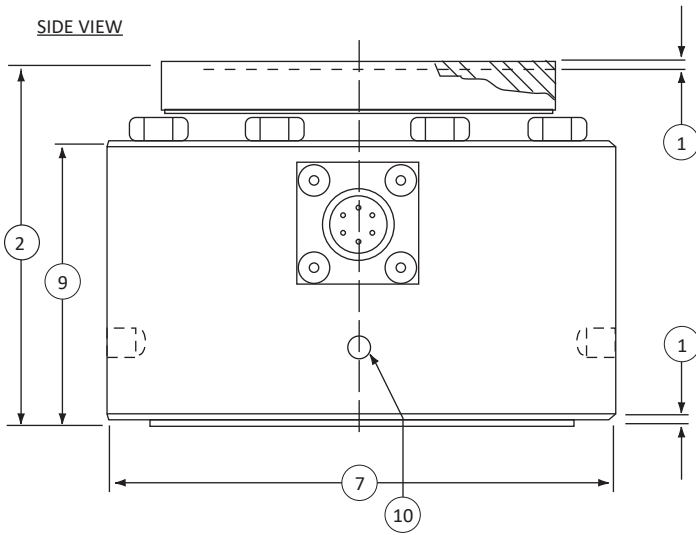
### OPTIONS

- Connector protection
- Standardized output
- Transducer Electronic Data Sheet (TEDS)
- Custom calibration
- Special temperature range

### ACCESSORIES

- Mating connector
- Instrumentation

## 1216 AXIAL TORSION LOAD CELL (U.S. & METRIC)



### DIMENSIONS

See Drawing	CAPACITY	
	U.S. (lbf/lbf-in)	Metric (kN/Nm)
	250/125, 500/250, 1K/500, 2K/1K	1.11/14.1, 2.22/28.2, 4.45/56.5, 8.9/113
	in	mm
(1)	0.070	2.0
(2)	3.00	76.2
(3)	$\frac{1}{4}$ -28 UNF x $\downarrow$ 0.43 on a 2.600 B.C.	M6 x 1-6H x $\downarrow$ 10.9 on a 66.00 B.C.
(4)	$\varnothing$ 3.20	$\varnothing$ 77.2
(5)	$\varnothing$ 2.000 (+0.002 / -0.000)	$\varnothing$ 50.00 (+0.51/-0.00)
(6)	2.77	70.3
(7)	$\varnothing$ 4.13	$\varnothing$ 104.3
(8)	$\varnothing$ 3.20	$\varnothing$ 81.3
(9)	2.33	59.2
(10)	$\varnothing$ 0.25 $\downarrow$ 0.29	$\varnothing$ 6.4 $\downarrow$ 7.4