

# Interface

## Summary Catalog



Summary Catalog v.1.6 10-09-2023

# LOWPROFILE® LOAD CELLS



**1000 Fatigue Rated**  
250 lbf to 1,000K lbf  
1.25 kN to 4,448 kN  
Fully Reversed High Cyclic Loading



**1100 Ultra Precision  
Very High Accuracy**  
300 lbf to 200K lbf  
1.33 kN to 890 kN



**1200 Standard Precision**  
300 lbf to 2,000K lbf  
1.33 kN to 8,896 kN



**12X8 Flange Mount  
Standard Precision**  
30K lbf to 330K lbf  
133 kN to 1,468 kN



**1500 Compact  
Low Capacity**  
25 lbf to 300 lbf  
111 N to 1.33 kN



**1600 Gold Standard®  
Calibration**  
500 lbf to 200K lbf  
2.22 kN to 900 kN  
4% lower load limit  
per ASTM E74



**1700 Flange Mount**  
220 lbf to 14K lbf  
1 kN to 63 kN  
Mounts Directly to Cylinders



**1800 Platinum  
Standard Calibration**  
1.1K lbf to 55K lbf  
4.89 kN to 245 kN  
Capable of 2% lower  
load limit per ASTM E74



**2400 Stainless Steel**  
100 lbf to 300K lbf  
445 N to 1,334 kN  
Environmentally Sealed  
Hermetic Deal Available



**3200 Precision  
Stainless Steel**  
2.5K lbf to 100K lbf  
11.1 N to 445 kN  
Hermetically Sealed



**3410/3420/3416/3430  
Intrinsically Safe Load Cells**  
750 to 60K lbf  
3.37 kN to 267 kN



**Internally Amplified  
Load Cells**  
3-Wire Amplified Tension  
& Compression Load Cells

## OTHER LOAD CELLS



**BPL Ultra Low Height  
Compression Unit**  
50 lbf to 500 lbf  
250 N to 2,500 N  
Self-Centering in all Directions  
High Output 4 mV/V



**WSSCL Stainless Steel  
Low Profile Compression  
Load Cell**  
220 lbf to 440.9K lbf  
100 kg to 200 MT



**WTS 1200 Standard Precision  
LowProfile® Wireless Load Cell**  
300 lbf to 2,000K lbf  
1.33 kN to 8,896 kN



**2000/2160/2200/2300  
Column and Canister  
Load Cells**  
50K lbf to 1M lbf  
630 kN to 4450 kN



**A4200/A4600  
WeighCheck™ Load Cells**  
2.5 lbf to 50K lbf  
11.1 kN to 222 kN



**IPCD Pressure Compensated  
Downhole Load Cell**  
High accuracy  
Maintenance free

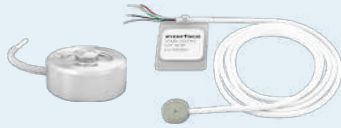


**REC Rod End**  
1K lbf to 50K lbf  
5 kN to 220 kN

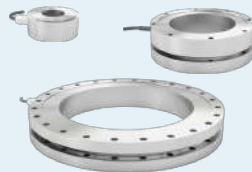


**WSSCL-MOUNT Weighing  
Assembly**  
220 lbf to 440.9K lbf  
100 kg to 200 MT

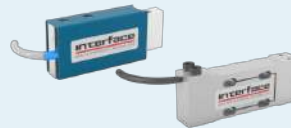
## MINI LOAD CELLS



**ConvextBT/LBMU/LBM  
Load Buttons**  
25 lbf to 50K lbf  
0.11 kN to 130 kN



**LW/LWPF1/LWPF2  
Load Washer**  
5 lbf to 135K lbf  
0.02 kN to 600 kN



**MB/MBP/MBI Mini Beam  
and Overload Protected  
Mini Beam**  
2 lbf to 2500 lbf  
10 N to 1.25 kN  
Safe Overload to 10x Capacity



**MBS Parallelogram Load Cell**  
2.2 lbf to 100 lbf  
9.8 N to 445 N



**MCC MCC Miniature  
Compression Load Cell**  
112.4 lbf  
500 N



**PBL1/PBL2/PBL3 Pillow  
Block Load Bearing Load Cell**  
1.1K lbf to 22.5K lbf  
5 kN to 100 kN



**SML Low Height S-Type**  
5 lbf to 2000 lbf  
22 N to 9 kN  
5 lbf, 10 lbf, 5 N, and 45 N Models  
Feature 10x Overload Protection



**SM S-Type**  
10 lbf to 1000 lbf  
50 N to 5000 N



**SMT Overload  
Protected S-Type**  
1.1 lbf to 450 lbf  
5 N to 2000 N  
500% +1,000% FS Safe Overload



**SMTM Micro S-Type**  
5 lbf to 50 lbf  
20 N to 200 N  
Micro-sized 3/4" x 3/4" x 1/4"  
1,000% Safe Overload



**SPI Platform Scale Load Cell**  
3 lbf to 150 lbf  
13.34 N to 667.2 N



**SSB Sealed Beam**  
50 lbf to 10K lbf  
222 N to 44.48 kN



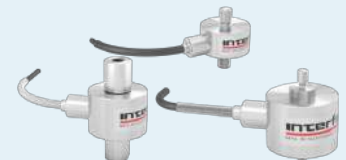
**SSM/SSM2 Sealed S-Type**  
50 lbf to 5K lbf  
200 N to 25 kN  
Available with Fatigue Rated Options



**SuperSC S-Type  
Miniature Load Cell**  
25 lbf to 1,000 lbf  
100 N to 5 kN



**ULC Ultra Low Capacity**  
0.11 lbf to 0.45 lbf  
0.5 N to 2 N  
Overload Protected



**WMC/WMCP/WMCFP  
Sealed Stainless Steel**  
1.1 lbf to 10K lbf  
500 gf to 45 kN  
Overload Protected  
Male Threads

## MULTI-AXIS SENSORS



**WSSB Welded Stainless  
Steel IP68 Environment  
Protected S-Beam**  
551 lbf to 44.1K lbf  
250 kg to 20 MT



**3-Axis Force**  
Force: 0.45 lbf to 112K lbf  
Force: 2 N to 500 kN



**3AR Series Round  
3-Axis Load Cells**  
Force: 2.2K lbf to 112K lbf  
Force: 10 kN to 500 kN



**6-Axis Force Torque**  
Force: 11.2 to 180K lbf  
Torque: 8.85 lbf-in to 354K lbf-in  
Force: 50 N to 800K N  
Torque: 1 Nm to 40K Nm

## MULTI-AXIS SENSORS CONTINUED



### 6ADF Series 6-Axis DIN Flange-Type Load Cells

Force: 20 N to 1.2 kN  
Torque: 1 Nm to 60 Nm



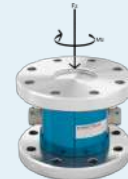
### 1216/1516/2816 Axial Torsion

Force: 100 to 15K lbf  
Torque: 50 to 7.5K lbf-in  
Force: 1.11 to 66.7 kN  
Torque: 5.6 to 847 Nm  
Fz, Mz



### 5200 XYZ Force and Moment

Force: 1K to 50K lbf  
Moment: 400 to 20K lbf-in  
Force: 4.45 to 222 kN  
Moment: 45.2 to 2.26K Nm  
Fz, Mx, My



### 5600 2-Axis Axial Torsion

Force: 6K to 180K lbf  
Torque: 5K to 300 lbf-in  
Force: 27 to 800 kN  
Torque: 560 to 33K Nm  
Fz, Mz

## LOAD PINS, TENSION LINKS, AND LOAD SHACKLES



### LP/WTSLP Load Pins

Up to 3,000K lbf  
Up to 13.3 kN  
Custom Designs Available with Amplification, Submersible, Wireless, and ATEX Options



### ISHK/WTSSHK Load Shackles

2.2K lbf to 2,205K lbf  
1 mt to 1K mt  
Available with Amplification, Submersible, Wireless, and ATEX Options



### ITL/WTSTL Tension Links

11K lbf to 220.4K lbf  
5 mt to 100 mt  
Custom Designs Available with Amplification, Submersible, Wireless, and ATEX Options



### WTSATL/ WTSATL-JR Lightweight and Compact Aluminum Wireless Tension Link

2.2K lbf to 661K lbf  
1 mt to 300 mt

## ROTARY TORQUE TRANSDUCERS



### AT104 Compact Size Force and Torque Transducer

4.5/0.89 lbf/lbf-in & 11.2/4.4 lbf/lbf-in  
20/0.1 N/Nm & 50/0.5 N/Nm



### AxialTQ<sup>®</sup> Rotary Torque

885 lbf-in to 88.5K lbf-in  
100 Nm to 10K Nm



### T1 Torque Coupling

400 lbf-in to 9K lbf-in  
50 Nm to 1K Nm  
Bearingless



### T27 Hollow Flange Bearingless

443 lbf-in to 8.85K lbf-in  
50 Nm to 1K Nm



### T2/T4 Ultra and Standard Precision

0.88 lbf-in to 177K lbf-in  
0.1 Nm to 20K Nm



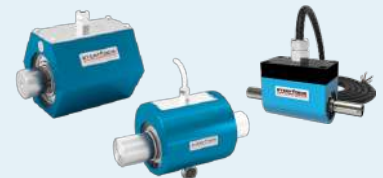
### T3/T5 Ultra and Standard Precision Pedestal Mount

0.88 lbf-in to 177K lbf-in  
0.1 Nm to 20K Nm



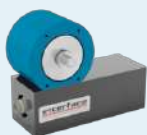
### T6/T7 Dual Range

44.3/4.43 lbf-in to 4.43K lbf-in to 443K lbf-in  
5/0.5 Nm to 500/50 Nm



### T8/T18/T23 General Purpose

1.77 lbf-in to 4.43K lbf-in  
0.2 Nm to 500 Nm



### T11 Bearingless

0.04 lbf-in to 1.327K lbf-in  
0.005 Nm to 150 Nm



### T12/T15 Square Drive

0.88 lbf-in to 177K lbf-in  
0.1 Nm to 5K Nm



### T22 Pulley Belt

177 lbf-in to 44K lbf-in  
20 Nm to 5K Nm  
High Roldal



### T25 High Speed

0.885 lbf-in to 44.3K lbf-in  
0.1 Nm to 5K Nm





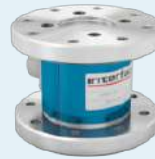
# REACTION TORQUE TRANSDUCERS



**T31, T32, T33, & T34 Spindle Torque**  
8.85 lbf-in to 4.43K lbf-in  
1 Nm to 500 Nm  
Speeds Up to 2K RPM Integrated Speed/Angle Measurement



**5330 Hollow Flange**  
60 lbf-in to 100K lbf-in  
6.8 Nm to 11.3K Nm



**5400 Series Flange Style**  
1K lbf-in to 500K lbf-in  
110 Nm to 55K Nm



**AT105 Contactless Force Torque Transducer**  
22.5/17.7 lbf/lbf-in 56.2/44.3 lbf/lbf-in & 112.4/44.3 lbf/lbf-in  
100/2 N/Nm 250/5N/Nm & 500/5 N/Nm



**MRT/MRTP Miniature Reaction Torque Series**  
1.77 lbf-in to 177 lbf-in  
0.2 Nm to 2 Nm  
7x Overload Protected



**MRT2/MRT2P Miniature Reaction Torque Series**  
1.77 lbf-in to 443 lbf-in  
0.2 Nm to 50 Nm  
3x Overload Protected

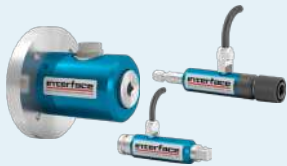


**TS11 Flange Style**  
88.5 lbf-in to 177K lbf-in  
10 Nm to 20K Nm



**TS12 Shaft Style**  
0.04 lbf-in to 177K lbf-in  
0.005 Nm to 20K Nm

# INSTRUMENTATIONS



**TS14/TS15/TS17 Square and Hex Drive**  
1.77 lbf-in to 17.7K lbf-in  
0.2 Nm to 5K Nm



**TSQ High Capacity Square Drive**  
300K lbf-in to 3,000K lbf-in  
34K Nm to 340K Nm



**480/482 Bidirectional Weight Indicator**  
Digital  
Environmentally Protected



**9330 High Speed Portable Display and Data Logger**  
3750Hz Peak Capture



**1280 Programmable Weight Indicator and Controller**  
Analog load cell scales  
Total scales  
Serial scales  
Program scales



**920i Programmable Weight Indicator and Controller**  
32 scale accumulators  
Millivolt calibration  
5-point linearization and geographical calibration



**9325 Portable Sensor Display**  
Digital  
Battery & USB Powered  
TEDS Ready



**9812-WTS Wireless Panel Mount Display For Single Transmitters**  
Wireless communication  
Compatible with all WTS products



**9825 General Purpose Indicator**  
General Purpose Instrument  
mV/V Input Indicator



**9840 Intelligent Calibration Grade Digital Indicator**  
Stores Multiple Calibrations



**9840-400-1-T-4 4-Channel Intelligent Indicator**  
Digital 4-Channel  
Intelligent Indicator



**9840TQ mV/V Input Torque Transducer Indicator**  
Digital and Intelligent mV/V  
Input Torque Transducer Indicator



# INSTRUMENTATIONS CONTINUED



**9850 mV/V Input Torque Transducer Indicator**  
25 lbf to 300 lbf  
111 N to 1.33 kN



**9870 High-Speed High Performance TEDS Ready Indicator**  
High Speed Digital



**9890 Strain Gage, Load Cell, and mV/V Indicator**  
mV/V Input Indicator



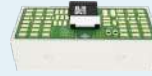
**9894 Analog Input Process Indicator**  
Analog Input Process Indicator



**BSC1/BSC2/BSC4 Multi-Channel Bridge Amplifier or PC Interface Module**  
1 Channel  
2 Channel  
4 Channel



**BTS Bluetooth Telemetry System**  
Bluetooth Strain Gage Transmitter



**BX6-BT Portable 6-Channel High Speed Bluetooth Data Logger**  
Compact Size  
Digital Inputs & Outputs



**BX8 Data Acquisition and Amplifier System**  
8 Channel



**CSC/LCSC Environmentally Sealed OEM Inline Signal Conditioner**  
Analog or Digital Output



**CSD Embedded Load Cell Converter and Digitizer Module**  
RS232, RS485, Modbus, CANbus, CANopen, and ASCII



**DMA2/ISG DIN Rail Mount Signal Conditioner**  
10-28VDC Power  
High Accuracy



**DIG-USB/DIG-USB-F USB and Fast USB Output Module**  
Configuration, Calibration, Graphing, Logging, and Display Software



**INF-USB3/SI-USB4 PC Input Module**  
Single and Dual Channel  
mV/V, VDC, or mA Input



**INF1 Single Sensor Weight Transmitter and Indicator**  
RS485, Analog, CANopen, PROFIBUS, Modbus/TCP, Ethernet TCP/IP, Ethernet/IP, PROFINET IO, EtherCAT4



**INF4 Two, Three, and Four Sensor Weight Transmitter and Indicator**  
RS485, Analog, CANopen, PROFIBUS, Modbus/TCP, Ethernet TCP/IP, Ethernet/IP, PROFINET IO, EtherCAT4



**JB104SS 4-Channel Stainless Steel Junction Box**  
4 Channel Summing Capability



**JB1100 4-Channel Advanced Signal Conditioning Transmitter Indicator and Junction Box**  
Four independent scales or four load cell inputs



**SGA AC/DC Powered Signal Conditioner**  
AC/DC Powered  
Millivolt to Analog Converter



**VSC2 Rugged Compact Vehicle Powered Signal Conditioner**  
High Accuracy Precision  
Differential Amplifier



**WTS Wireless Telemetry System**  
Sensor Transmitters  
Receivers  
Displays



# CALIBRATION



**CX Series Precision mV/V Transfer Standard**  
Precision mV/V Output  
Analog or Digital Output



**GS-SYS Gold Standard® Calibration System Load Frame**  
Capacities up to 100K lbf



**GS-SYS03 Gold Standard® Portable Load Cell Calibration System**  
Reduces Calibration Time 50-90%  
Automatic Calibration and Archiving



**GS-SYS04 Gold Standard® Portable E4 Machine Calibration System**  
Reduces Calibration Time 50-90%  
Automatic Calibration and Archiving



**IFVF Interface Force Verification Frame**  
Up to 5,000 lbf capacity  
Portable, Lightweight, and Accurate

## Calibration and Repair Services

- NIST Traceability
- ISO 17025 Accredited
- ASTM E74 Calibration
- ANSI/NCSL Z540
- MIL-STD-45662A
- ISO 376

## Accreditations

Interface is A2LA accredited (#1991.01) to perform the most accurate universal calibrations on all Interface and competitive force and torque transducers in 5 days



TEDS - Plug & Play Ready



USB Option Available



Software Available

*Interface force measurement products are available in many design configurations for project designs requiring the highest performance.*

**To learn more about the Interface products or force measurement solutions call 480-948-5555.**

[www.interfaceforce.com](http://www.interfaceforce.com)

# ACCESSORIES



**CT Cable Assemblies**  
For connecting transducers to instrumentation  
Standard and custom lengths  
Shielded cable



**CA Calibration Adapters**  
Improves accuracy  
Spherical end for compression loading  
Metric sizes available



**CLV Clevises**  
Precision machined  
Commonly used with REBs  
Male threads



**EVALUATOR 3 Interface Force Verification Frame**  
Used in testing, troubleshooting  
mV/V instrumentation



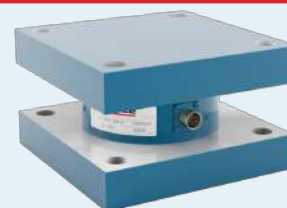
**JN Jam Nuts**  
Used with REBs, clevises and calibration adapters  
Flat, parallel surfaces  
Standard thread sizes



**LB Load Cell Load Buttons**  
Converts universal cell to compression only  
Spherical loading surface



**MC/CN Mating Connectors**  
Interconnects between load cell and instruments



**TP/BP Mounting Plates**  
Eliminates the requirement for expansion assemblies in most installations



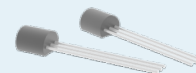
**RCAL Resistors**  
Precision wire-wound  
5 ppm/°C, 0.01%  
Used for shunt calibration



**REB Rod End Bearings**  
For tension applications  
Reduces alignment error  
Metric sizes available



**TA/THD Thread Adapters**  
Adapts male to female  
Common Interface thread sizes  
Adapts one thread size to another



**TEDS Interface Force Verification Frame**  
Provides Sensor with Electronic Identification  
Plug & Play Ready

**Interface is the world's trusted leader in technology, design and manufacturing of force measurement solutions.**

**Our clients include a "who's who" of the aerospace, automotive and vehicle, medical device, energy, industrial manufacturing, test and measurement industries.**

Interface engineers around the world are empowered to create high-level tools and solutions that deliver consistent, high quality performance. These products include load cells, torque transducers, multi-axis sensors, wireless telemetry, instrumentation and calibration equipment.

Interface, Inc., was founded in 1968 and is a US-based, woman-owned technology manufacturing company headquartered in Scottsdale, Arizona.