

Measure Better



Houston Office  
13777 Stafford Point Dr. Stafford, TX  
77477, US  
Tel: +001-877-215-7752



# PRODUCT CATALOG

Accelerometers & Accessories







Established in 1997, CRY SOUND is a trailblazing company that delivers top-tier acoustic measurement products and solutions. Guided by the visionary leadership of our founder, Mr. Ruiying Cao, we've achieved unparalleled expertise and pioneered groundbreaking technologies in acoustic measurement.

CRY SOUND offers an impressive range of products, including measurement microphones, electroacoustic analysis systems, acoustic cameras, and noise & vibration analysis systems. These diverse offerings enable us to cater to the unique needs of our clients with precision and innovation.

Our global footprint spans over 80 countries, serving a customer base of more than 10,000. We take immense pride in empowering engineers and technicians with our state-of-the-art solutions. From consumer electronics to energy production, our clients come from a variety of industries, harnessing our technology for unique applications all over the world.

# CONTENTS

INTRODUCTION	02
ACCELEROMETERS	03
	04

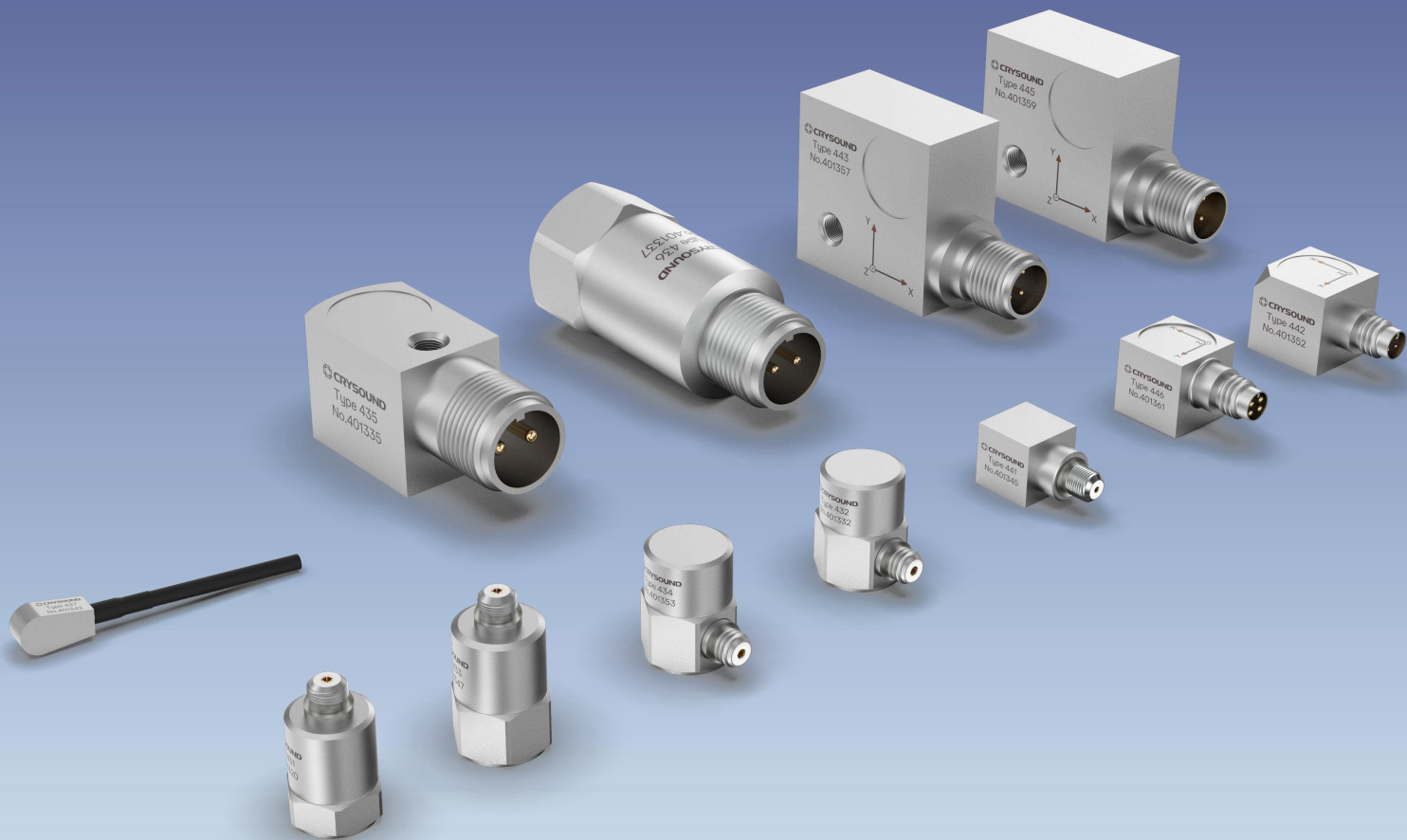


# Accelerometers

CRY SOUND offers piezoelectric IEPE accelerometers and piezoelectric charge accelerometers for you to choose.

The IEPE piezoelectric accelerometer has a built-in preamplifier and low-impedance output. It can be used with armored shielded cables for monitoring vibration parameters of industrial equipment such as acceleration, velocity, and displacement.

The piezoelectric charge accelerometer is rugged and durable, providing high dynamic range, long-term stability, and durability. It is suitable for vibration measurement in harsh working conditions.



# ACCELEROMETERS



CRY431

CRY431 is a high-range IEPE piezoelectric accelerometer, 5mV/g, with a top-end 10-32UNF connector, ideal for monitoring high amplitude shock and vibration.



CRY432

CRY432 is a high-range IEPE piezoelectric accelerometer, 5mV/g, with a side 10-32UNF connector, ideal for monitoring high amplitude shock and vibration.



CRY433

CRY433 is a high-sensitivity IEPE piezoelectric accelerometer, 100 mV/g. Adopting a top 10-32UNF connector, it has the features of high precision and low noise and can be used for precision vibration monitoring.

Model	Sensitivity	Frequency Range	Measuring Range(Peak)	Weight	Connector Type	Axis
CRY431	5mV/g (160Hz)	1Hz-12kHz(±1dB)	±1000g	9.5g	10-32UNF(M5)	1
CRY432	5mV/g (160Hz)	1Hz-12kHz(±1dB)	±1000g	9.5g	10-32UNF(M5)	1
CRY433	100mV/g(160Hz)	1Hz-5kHz(±1dB)	±50g	6.5g	10-32UNF(M5)	1

# ACCELEROMETERS



## ◀ CRY434

CRY434 is a high-sensitivity IEPE piezoelectric accelerometer, 100 mV/g. Adopting a side 10-32UNF connector, it has the features of high precision and low noise and can be used for precision vibration monitoring.



## ◀ CRY436

CRY436 is a high-sensitivity industrial IEPE piezoelectric accelerometer, 100 mV/g. The output mode is two-core at the top. It has built-in isolation and floating, widely used in industrial vibration monitoring.



## ◀ CRY438

CRY438 is a high-range IEPE piezoelectric accelerometer, 10 mV/g, with a top 10-32UNF connector. It is very suitable for monitoring high-amplitude shocks and vibrations.



## ◀ CRY442

CRY442 is a triaxial high-sensitivity industrial IEPE piezoelectric accelerometer, 100 mV/g. Adopting a side-mounted 1/4-28 four-core output. It has the characteristics of high precision and easy installation and is suitable for general vibration monitoring.



## ◀ CRY445

CRY445 is a high-sensitivity triaxial industrial IEPE piezoelectric accelerometer, 100 mV/g. It uses an M12 side-mounted four-core output. It has built-in isolation and floating, widely used in industrial vibration monitoring.



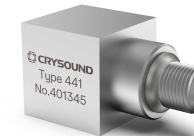
## ◀ CRY435

CRY435 is a high-sensitivity industrial IEPE piezoelectric accelerometer, 100 mV/g. The output mode is two-core at the top. It has built-in isolation and floating, widely used in industrial vibration monitoring.



## ◀ CRY437

CRY437 is a general-purpose miniature IEPE piezoelectric accelerometer, 10 mV/g. Adopt an integrated connecting line with 10-32UNF connector output. Its compact design is very suitable for measurement small spaces and delicate structures



## ◀ CRY441

CRY441 is a miniature high-sensitivity charge accelerometer, 5 pC/g, with a side 10-32UNF connector. It is suitable for limited space and high dynamic range measurement.



## ◀ CRY443

CRY443 is a triaxial industrial IEPE piezoelectric accelerometer, 50 mV/g. It uses an M12 side-mounted four-core output. It has built-in isolation and floating, widely used in industrial vibration monitoring.



## ◀ CRY446

CRY446 is a high-range triaxial IEPE piezoelectric accelerometer, 10 mV/g. It uses a side-mounted 1/4-28 four-core output. It is very suitable for monitoring high-amplitude shocks and vibrations.

Model	Sensitivity	Frequency Range	Measuring Range(Peak)	Weight	Connector Type	Axis
CRY434	100mV/g(160Hz)	0.5Hz-8kHz(±1dB)	±50g	13g	10-32UNF(M5)	1
CRY435	100mV/g(160Hz)	1Hz-6kHz(±10%) 0.5Hz-10kHz(±3dB)	±50g	70g	MIL-C-5015 (2-pin socket)	1
CRY436	100mV/g(160Hz)	1Hz-12kHz(±10%) 0.5Hz-20kHz(±3dB)	±50g	48g	MIL-C-5015 (2-pin socket)	1
CRY437	10mV/g(160Hz)	2Hz-8kHz(±1dB)	±500g	2g(no cable)	Overall cable 10-32UNF(M5))	1
CRY438	10mV/g(160Hz)	1Hz-10kHz(±1dB) 0.6Hz-20kHz(±3dB)	±500g	9.5g	10-32UNF(M5)	1

Model	Sensitivity	Frequency Range	Measuring Range(Peak)	Weight	Connector Type	Axis
CRY441	5pC/g	1Hz-10kHz(±1dB)	±2500g	7.5g	10-32UNF(M5)	1
CRY442	100mV/g	0.5Hz-5kHz(±1dB)	±50g	18g	1/4-28 (4 pin socket)	3
CRY443	50mV/g	1Hz-40kHz(±10%) 0.7Hz-8kHz(±3dB)	±100g	95g	M12*1 (4 pin socket)	3
CRY445	100mV/g	1Hz-4kHz(±1dB) 0.5Hz-8kHz(±3dB)	±80g	95g	M12*1 (4 pin socket)	3
CRY446	10mV/g	1Hz-5kHz(±1dB)	±500g	12g	1/4-28 (4 pin socket)	3